



RÓTULA JOPER



50.RA
ACOPL. ROTULA (JOPER) RA



50.RB
ACOPL. ROTULA (JOPER) RB



50.RC
ACOPL. ROTULA (JOPER) RC



50.RD
ACOPL. ROTULA (JOPER) RD



50.RTM
ACOPL. ROTULA (JOPER) RTM



50.RV
VEDANTE ROTULA (JOPER)

BAUER



50.CA
ACOPL. BAUER CA



50.CB
ACOPL. BAUER CB



50.CC
ACOPL. BAUER CC



50.CD
Acopl. Bauer CD



50.CV
Junta P/Acopl. Bauer

UMT



50.UA
ACOPLAMENTO TIPO UMT-A FEMEA



50.UB
ACOPLAMENTO TIPO UMT-B MACHO



50.UC
ACOPLAMENTO TIPO UMT-C FEMEA



50.UD
ACOPLAMENTO TIPO UMT-D
MACHO



50.UV
VEDANTE P/ACOPL. UMT

UMT



50.UC
ACOPLAMENTO TIPO UMT-C
FEMEA



50.UD
ACOPLAMENTO TIPO UMT-D
MACHO



50.UV
VEDANTE P/ACOPL. UMT

KAMLOCK



%50.KA%
KAMLOCK TIPO-A



50.KB
KAMLOCK TIPO-B



50.KC
KAMLOCK TIPO-C



50.KD
KAMLOCK TIPO-D



50.KE
KAMLOCK TIPO-E



50.KF
KAMLOCK TIPO-F MACHO R.
MACHO



50.KDP
KAMLOCK TIPO-DP



50.KDC
KAMLOCK TIPO-DC



50.APIK
ADAPTADOR API / KAMLOCK



50.KJ
JUNTAS - J



%50.KAA%
KAMLOCK TIPO-AA



50.KDA
Kamlock Tipo-DA Red. Femea
Macho Alumínio

GUILLEMIN



50.GA
GUILLEMIN C/ANEL MOD.A
P/TUBO



50.GB
GUILLEMIN S/ANEL MOD.B
R/FEMEA



50.GC
GUILLEMIN S/ANEL MOD.C
R/MACHO



50.GD
GUILLEMIN C/ANEL MOD.D
R/FEMEA



50.GE
GUILLEMIN C/ANEL MOD.E
R/MACHO



50.GT
GUILLEMIN TAMPÃO C/ANEL
MOD.T



50.GR
GUILLEMIN REDUÇÃO C/ANEL
MOD.R



50.GJ
GUILLEMIN JUNTA MOD-J



50.AG
ABRAÇ. SEGURANÇA

STORZ



50.SB



50.SC



50.SD

ACOPL. STORZ ALUMÍNIO



50.SR
STORZ REDUÇÃO B ALUMÍNIO

**ACOPL. STORZ R.FEMEA
ALUMÍNIO**



50.ST
STORZ TAMPÃO ALUMÍNIO

**ACOPL. STORZ R.MACHO-
ALUMÍNIO**



50.Sj
JUNTA BRANCA P/STORZ A



50.SK.01
CHAVE P/ STORZ

BETÃO



50.BA
ACOPLAMENTO FEM P/BETAO



50.BB
ACOPLAMENTO MACHO P/BETAO



50.BC
ACOPLAMENTO FEM P/BETAO



50.BD
ACOPLAMENTO MACHO P/BETAO



50.BV
**JUNTA P/ ACOPLAMENTO DE
BETAO**



50.BE
MANIPULO P/ ACOPL. BETAO



50.BF
CAVILHA P/ ACOPL. BETAO

AR



50.AA
LIGADOR DIN 3483



50.AF
LIGADOR C/GOLA DIN 3483



50.AB
LIGADOR R/FEMEA DIN 3482



50.AC
LIGADOR R/MACHO DIN 3483



50.AD
ABRAÇADEIRA DIN-20039 A



50.AH
ABRAÇADEIRA C/ GARRA DIN-20039 B



50.AV
VEDANTE MULLENBACH

ACESSÓRIOS



50.ES
ESPIGA P/ SOLDAR FERRO



50.PR
PONTA ROSCADA MACHO P/ SOLDAR FERRO



50.ET
ESPIGA T/T FERRO

COMBUSTIVEL



50.HF
PONT. FEMEA BSP DIN-2817



50.HM
PONT. MACHO BSP DIN-2817



50.AG
ABRAÇ. SEGURANÇA



50.FF

**PONT. REUSAVEL
FEMEA BSP P/
TUBO
COMBUSTIVEL**

50.FM

**PONT. REUSAVEL
MACHO BSP P/
TUBO
COMBUSTÍVEL**

ACESSÓRIOS INOX DIN / SMS / CLAMP



50.SMS.M

PONTEIRA MACHO SMS INOX 316



50.SMS.F

PONTEIRA FÊMEA SMS INOX 316



50.DIN.F

PONTEIRA FÊMEA DIN INOX 316



50.DIN.M

PONTEIRA MACHO DIN INOX 316



50.TRI

PONTEIRA TRI-CLAMP INOX-316



50.TRIA

**ABRAÇADEIRA 1-PINO TRI-CLAMP
INOX-304**



50.TRIAD

**ABRAÇADEIRA 2-PINOS TRI-
CLAMP INOX-304**



50.TRIV

**VED. P/ TRI-CLAMP SILICONE (
DN25) 23X50X5,5**



50.AG

ABRAÇ. SEGURANÇA

ABRAÇADEIRAS



12.03
ABRAÇADEIRA SUPER



50.AG
ABRAÇ. SEGURANÇA



50.AH
**ABRAÇADEIRA C/ GARRA DIN-
20039 B**



50.AD
ABRAÇADEIRA DIN-20039 A



50.TRIA
**ABRAÇADEIRA 1-PINO TRI-CLAMP
INOX-304**



50.TRIAD
**ABRAÇADEIRA 2-PINOS TRI-
CLAMP INOX-304**

CHAVE P/ STORZ



50.SK.01
CHAVE P/ STORZ

CAMISAS E CAPSULAS

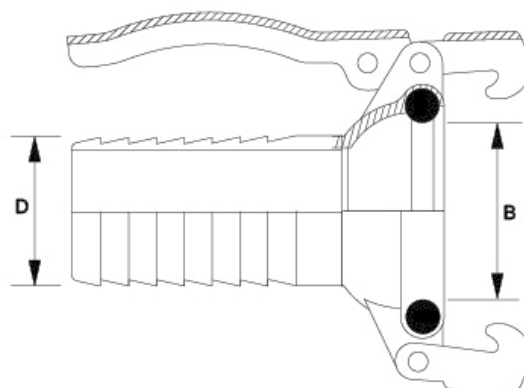


50.102
CAMISA INDUST. INOX-316



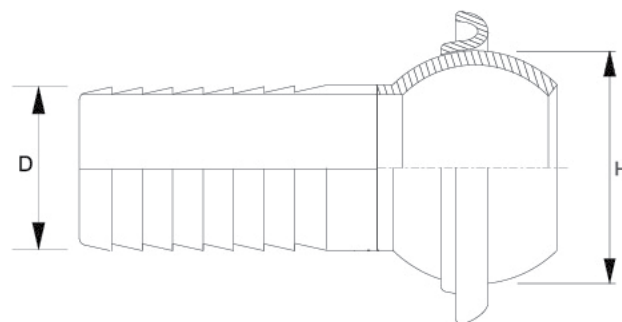
50.104
CAPSULA ALUMINIO

RÓTULA JOPER

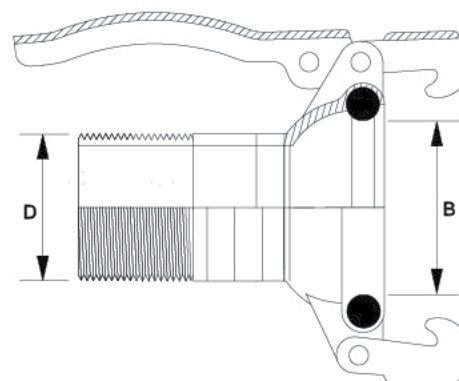
ACOPL. ROTULA (JOPER) RA
50.RA


CÓDIGO	D	B	TIPO
50.RA.S330/F	30	60	FERRO
50.RA.S340/F	40	60	FERRO
50.RA.S350/F	50	60	FERRO
50.RA.S350/I	50	60	INOX
50.RA.S360/F	60	60	FERRO
50.RA.S560/F	60	84	FERRO
50.RA.S570/F	70	84	FERRO
50.RA.S770/F	70	102	FERRO
50.RA.S775/F	75	102	FERRO
50.RA.S780/F	80	102	FERRO
50.RA.S790/F	90	102	FERRO
50.RA.S10100/F	100	120	FERRO
50.RA.S12100/F	100	134	FERRO
50.RA.S10110/F	110	120	FERRO
50.RA.S12110/F	110	134	FERRO
50.RA.S12120/F	120	134	FERRO
50.RA.S12125/F	125	134	FERRO
50.RA.S15150/F	150	168	FERRO
50.RA.S20200/F	200	235	FERRO

ACOPL. ROTULA (JOPER) RB
50.RB

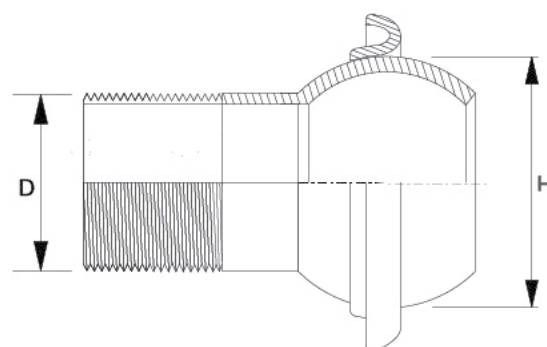


CÓDIGO	D	H	TIPO
50.RB.S340/F	40	70	FERRO
50.RB.S350/F	50	70	FERRO
50.RB.S350/I	50	70	INOX
50.RB.S360/F	60	70	FERRO
50.RB.S560/F	60	89	FERRO
50.RB.S570/F	70	89	FERRO
50.RB.S775/F	75	101	FERRO
50.RB.S780/F	80	101	FERRO
50.RB.S790/F	90	101	FERRO
50.RB.S790/I	90	102	INOX
50.RB.S10100/F	100	128	FERRO
50.RB.S12100/F	100	148	FERRO
50.RB.S10110/F	110	128	FERRO
50.RB.S12110/F	110	148	FERRO
50.RB.S12120/F	120	148	FERRO
50.RB.S12125/F	125	148	FERRO
50.RB.S15150/F	150	179	FERRO
50.RB.S20200/F	200	230	FERRO

ACOPL. ROTULA (JOPER) RC
50.RC


CÓDIGO	D	B	TIPO
50.RC.S324/F	1.1/2"	60	FERRO
50.RC.S332/F	2"	60	FERRO
50.RC.S532/F	2"	84	FERRO

CÓDIGO	D	B	TIPO
50.RC.S740/F	2.1/2"	102	FERRO
50.RC.S748/F	3"	102	FERRO
50.RC.S748/I	3"	102	INOX
50.RC.S1064/F	4"	120	FERRO
50.RC.S1280/F	5"	134	FERRO
50.RC.S1596/F	6"	179	FERRO

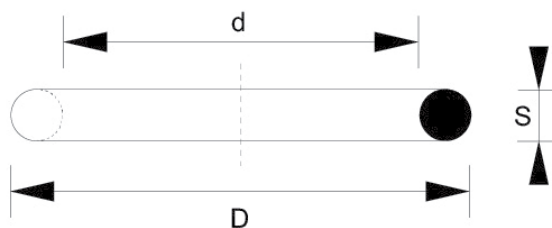
ACOPL. ROTULA (JOPER) RD
50.RD


CÓDIGO	D	H	TIPO
50.RD.S324/F	1.1/2"	70	FERRO
50.RD.S332/F	2"	70	FERRO
50.RD.S332/I	2"	70	INOX
50.RD.S532/F	2"	89	FERRO
50.RD.S740/F	2.1/2"	101	FERRO
50.RD.S748/F	3"	101	FERRO
50.RD.S1064/F	4"	128	FERRO
50.RD.S1280/F	5"	148	FERRO
50.RD.S1596/F	6"	179	FERRO

ACOPL. ROTULA (JOPER) RTM
50.RTM


CÓDIGO	mm	TIPO
50.RTM.S15/F		FERRO
50.RTM.S3/F	50	FERRO
50.RTM.S5/F	60	FERRO

CÓDIGO	mm	TIPO
50.RTM.S7/F	75	FERRO
50.RTM.S10/F	100	FERRO
50.RTM.S12/F	125	FERRO

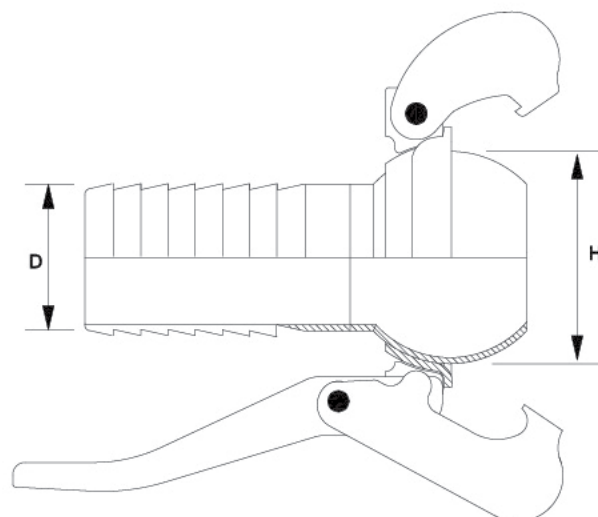
VEDANTE ROTULA (JOPER)
50.RV


CÓDIGO	d	D	S	TIPO	COR
50.RV.S03	62	80	9	NBR	■
50.RV.S05	84	104	10	NBR	■
50.RV.S07	101	125	12	NBR	■
50.RV.S10	118	144	13	NBR	■
50.RV.S12	140	168	14	NBR	■
50.RV.S15	170	202	16	NBR	■
50.RV.S20	237	273	18	NBR	■
50.RV.S25	276	320	22	NBR	■
50.RV.S30	354	400	23	NBR	■

BAUER

ACOPL. BAUER CA

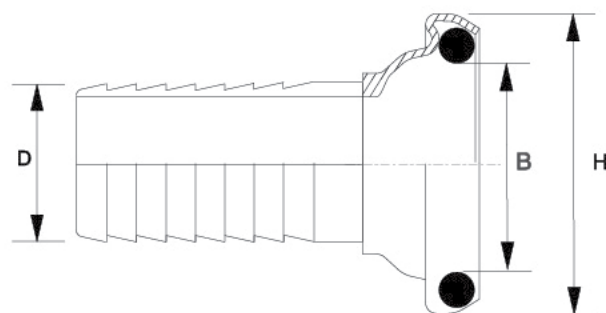
50.CA



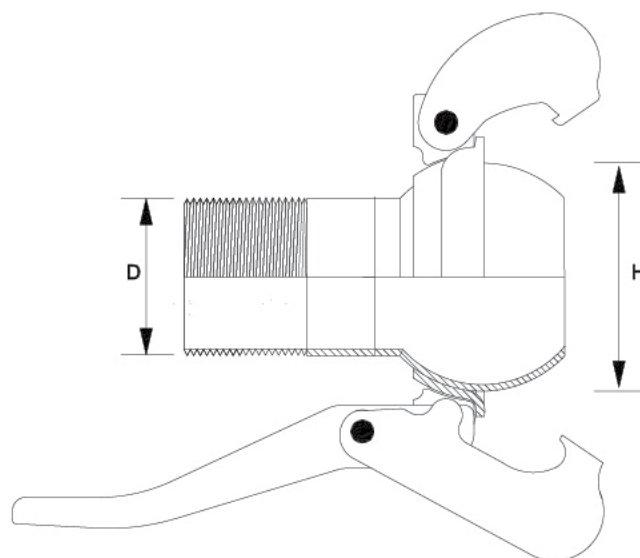
CÓDIGO	D	H	TIPO
50.CA.5050/F	50	70	FERRO
50.CA.7675/F	75	98	FERRO
50.CA.8980/F	80	120	FERRO
50.CA.8990/F	90	120	FERRO
50.CA.108100/F	100	145	FERRO
50.CA.133125/F	125	158	FERRO
50.CA.159150/F	150	180	FERRO

ACOPL. BAUER CB

50.CB

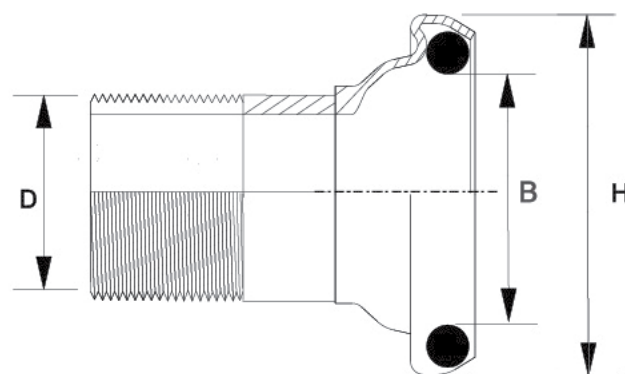


CÓDIGO	D	B	H	TIPO
50.CB.5050/F	50	60	83	FERRO
50.CB.7675/F	75	88	117	FERRO
50.CB.8980/F	80	106	137	FERRO
50.CB.8990/F	90	106	137	FERRO
50.CB.108100/F	100	132	166	FERRO
50.CB.133125/F	125	150	191	FERRO
50.CB.159150/F	150	165	212	FERRO

ACOPL. BAUER CC
50.CC


CÓDIGO	D	H	TIPO
50.CC.5024/F	1.1/2"	70	FERRO
50.CC.5032/F	2"	70	FERRO
50.CC.7640/F	2.1/2"	98	FERRO
50.CC.8948/F	3"	120	FERRO
50.CC.10864/F	4"	145	FERRO
50.CC.13380/F	5"	158	FERRO
50.CC.15996/F	6"	180	FERRO

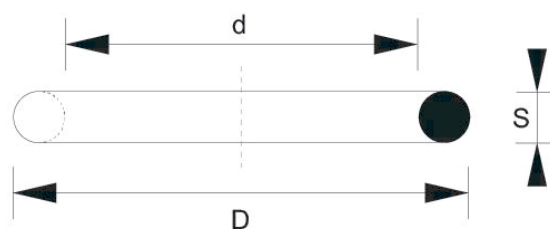
Acopl. Bauer CD
50.CD



CÓDIGO	D	B	H
50.CD.5024/F	1.1/2"	60	83
50.CD.5032/F	2"	60	83
50.CD.7640/F	2.1/2"	88	117
50.CD.8948/F	3"	106	137
50.CD.10864/F	4"	132	166
50.CD.13380/F	5"	150	191
50.CD.15996/F	6"	165	212

Junta P/Acopl. Bauer

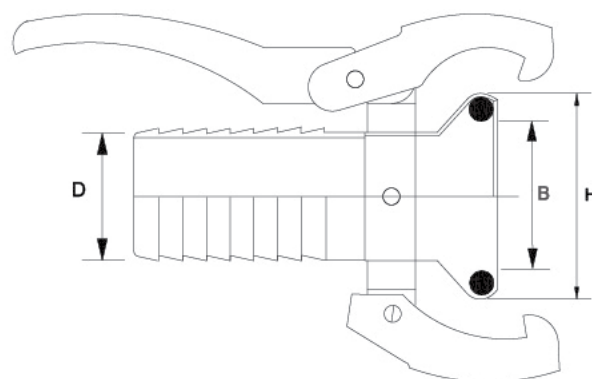
50.CV



CÓDIGO	d	D	S	TIPO	COR
50.CV.50	62	80	9	NBR	■
50.CV.76	88	116	14	NBR	■
50.CV.89	105	133	14	NBR	■
50.CV.108	130	160	15	NBR	■
50.CV.133	140	188	24	NBR	■
50.CV.159	165	203	19	NBR	■
50.CV.194	220	256	18	NBR	■

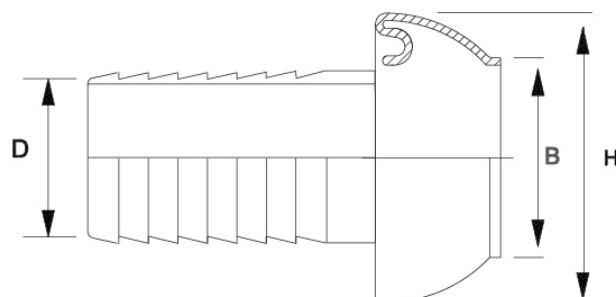
UMT

ACOPLAMENTO TIPO UMT-A FEMEA

50.UA


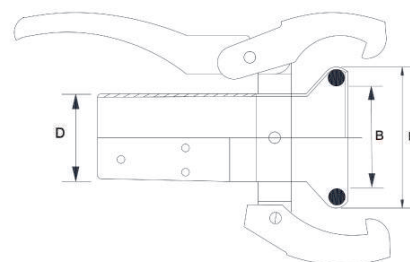
CÓDIGO	D	B	H
50.UA.108100/F			
50.UA.5050/F	50	56	85
50.UA.7050/F	50	77	108
50.UA.7065/F	65	77	108
50.UA.7065/F/BT	65	77	108
50.UA.8975/F	75	104	133
50.UA.8990/F	90	104	133
50.UA.133125/F	125	136	188
50.UA.159150/F	159	136	188

ACOPLAMENTO TIPO UMT-B MACHO

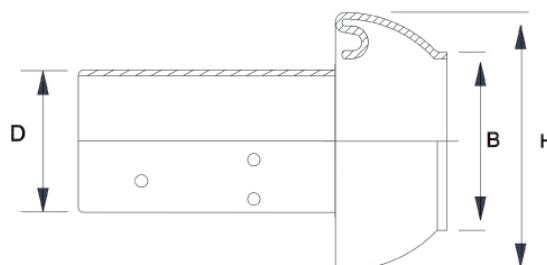
50.UB


CÓDIGO	D	B	H
50.UB.5050/F	50	53	77
50.UB.7050/F	50	75	105
50.UB.7065/F	65	75	105
50.UB.7065/F/BT	65	75	105
50.UB.8975/F	75	95	133

CÓDIGO	D	B	H
50.UB.8990/F	90	95	133
50.UB.108100/F	100	108	155
50.UB.133125/F	125	138	180
50.UB.159150/F	150	138	180

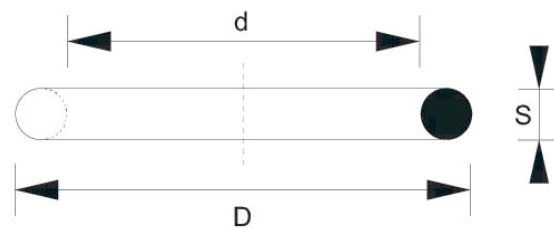
ACOPLAMENTO TIPO UMT-C FEMEA
50.UC


CÓDIGO	P/ TUBO	D	B	H
50.UC.7050	50x66	68	75	105
50.UC.7065	65x85	0	75	105

ACOPLAMENTO TIPO UMT-D MACHO
50.UD


CÓDIGO	P/ TUBO	D	B	H
50.UD.7050	50x66	68	75	105
50.UD.7065	65x85	0	75	105

VEDANTE P/ACOPL. UMT
50.UV

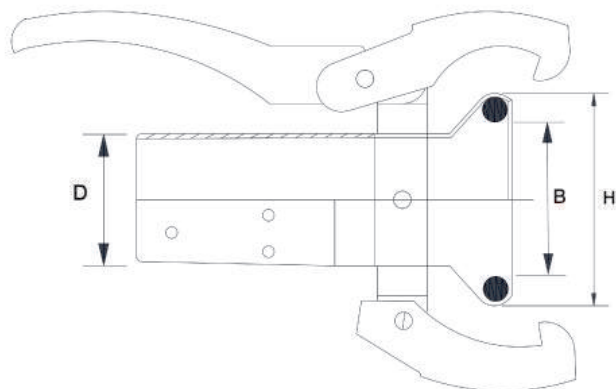


CÓDIGO	d	D	S	TIPO	COR
50.UV.50	63	85	11	NBR	■
50.UV.70	77	103	13	NBR	■
50.UV.89	109	137	14	NBR	■
50.UV.108	124	160	18	NBR	■
50.UV.133	146	190	22	NBR	■
50.UV.159	176	217	20,5	NBR	■

UMT

ACOPLAMENTO TIPO UMT-C FEMEA

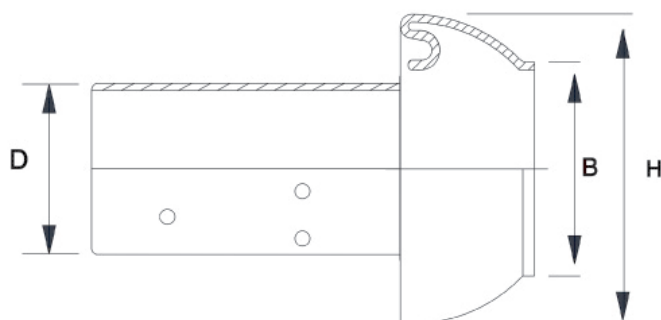
50.UC



CÓDIGO	P/ TUBO	D	B	H
50.UC.7050	50x66	68	75	105
50.UC.7065	65x85	0	75	105

ACOPLAMENTO TIPO UMT-D MACHO

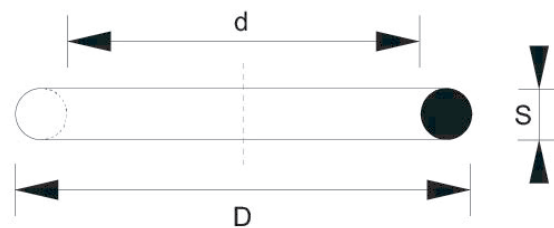
50.UD



CÓDIGO	P/ TUBO	D	B	H
50.UD.7050	50x66	68	75	105
50.UD.7065	65x85	0	75	105

VEDANTE P/ACOPL. UMT

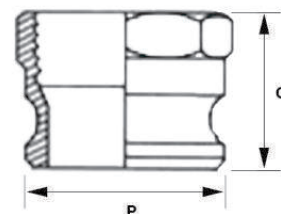
50.UV



CÓDIGO	d	D	S	TIPO	COR
50.UV.50	63	85	11	NBR	■
50.UV.70	77	103	13	NBR	■
50.UV.89	109	137	14	NBR	■
50.UV.108	124	160	18	NBR	■
50.UV.133	146	190	22	NBR	■
50.UV.159	176	217	20,5	NBR	■

KAMLOCK

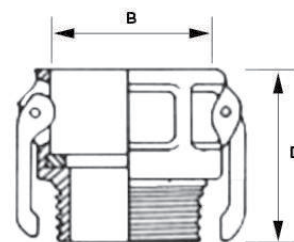
KAMLOCK TIPO-A

50.KA


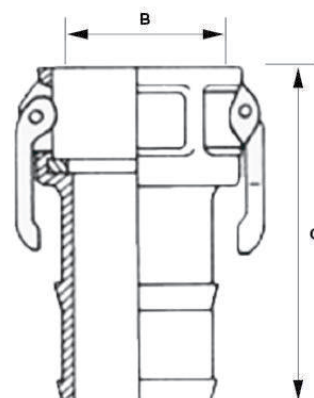
CÓDIGO	ROSCA	P	O	PRESSÃO BAR	TIPO	KG/UNI
50.KA.0808/A	1/2"	23.8	37	11	ALUMINIO	0.025
50.KA.1212/A	3/4"	32	40	18	ALUMINIO	0.04
50.KA.1616/A	1"	37	48	18	ALUMINIO	0.056
50.KA.2020/A	1.1/4"	45.5	55	18	ALUMINIO	0.086
50.KA.2424/A	1.1/2"	53.5	36	18	ALUMINIO	0.115
50.KA.3232/A	2"	63	62	18	ALUMINIO	0.147
50.KA.4040/A	2.1/2"	76	86	11	ALUMINIO	0.265
50.KA.4848/A	3"	91.5	88	9	ALUMINIO	0.281
50.KA.6464/A	4"	119	78	7	ALUMINIO	0.617
50.KA.8080/A	5"	146	78	5	ALUMINIO	0.593
50.KA.9696/A	6"	176	82	5	ALUMINIO	0.991
50.KA.0808/I	1/2"	23.8	37	11	INOX	0.045
50.KA.1212/I	3/4"	32	40	18	INOX	0.084
50.KA.1616/I	1"	23	48	18	INOX	0.124
50.KA.2020/I	1.1/4"	45.5	55	18	INOX	0.165
50.KA.2424/I	1.1/2"	53.5	36	18	INOX	0.252
50.KA.3232/I	2"	63	62	18	INOX	0.355
50.KA.4040/I	2.1/2"	76	86	11	INOX	0.496
50.KA.4848/I	3"	91.5	88	9	INOX	0.618
50.KA.6464/I	4"	119	78	7	INOX	1.146
50.KA.1616/P	1"	37	48	7	POLIPROPILENO	0.109
50.KA.3232/P	2"	63	62	7	POLIPROPILENO	0.231
50.KA.4848/P	3"	91.5	88	4	POLIPROPILENO	0.365

KAMLOCK TIPO-B

50.KB



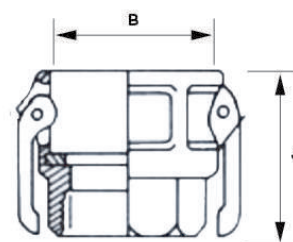
CÓDIGO	ROSCA MACHO	B	D	PRESSÃO BAR	TIPO
50.KBS.3232/I	2"	90	79	18	INOX
50.KB.0808/A	1/2"	24.2	46	11	ALUMINIO
50.KB.1212/A	3/4"	33	49	18	ALUMINIO
50.KB.1616/A	1"	37.5	60	18	ALUMINIO
50.KB.2020/A	1.1/4"	46	68	18	ALUMINIO
50.KB.2424/A	1.1/2"	54	70	18	ALUMINIO
50.KB.3232/A	2"	64	79	18	ALUMINIO
50.KB.4040/A	2.1/2"	76.3	85	11	ALUMINIO
50.KB.4848/A	3"	92.5	90	9	ALUMINIO
50.KB.6464/A	4"	120	101	7	ALUMINIO
50.KB.8080/A	5"	146.5	122	5	ALUMINIO
50.KB.9696/A	6"	176.5	112	5	ALUMINIO
50.KB.0808/I	1/2"	24.2	46	11	INOX
50.KB.1212/I	3/4"	33	49	18	INOX
50.KB.1616/I	1"	37.5	60	18	INOX
50.KB.2020/I	1.1/4"	46	68	18	INOX
50.KB.2424/I	1.1/2"	54	70	18	INOX
50.KB.3232/I	2"	64	79	18	INOX
50.KB.4040/I	2.1/2"	76.3	85	11	INOX
50.KB.4848/I	3"	92.5	90	9	INOX
50.KB.6464/I	4"	120	101	7	INOX
50.KB.1616/P	1"	37.5	48	18	POLIPROPILENO
50.KB.3232/P	2"	64	79	18	POLIPROPILENO
50.KB.4848/P	3"	92.5	90	9	POLIPROPILENO

KAMLOCK TIPO-C
50.KC


CÓDIGO	Tubo	B	G	PRESSÃO BAR	TIPO
50.KC.96150/I					
50.KC.0813/A	13	24.2	66	11	ALUMINIO
50.KC.1219/A	20	33	85	18	ALUMINIO
50.KC.1625/A	25	37.5	98	18	ALUMINIO
50.KC.2032/A	32	46	104	18	ALUMINIO
50.KC.2438/A	38	54	109	18	ALUMINIO
50.KC.3250/A	50	64	124	18	ALUMINIO
50.KC.4063/A	63	76.3	124	11	ALUMINIO
50.KC.4875/A	75	92.5	159	9	ALUMINIO
50.KC.64100/A	100	120	169	7	ALUMINIO
50.KC.80125/A	125	146.5	188	5	ALUMINIO
50.KC.96150/A	150	176.5	240	5	ALUMINIO
50.KC.0813/I	13	24.2	85	11	INOX
50.KC.1219/I	20	33	85	18	INOX
50.KC.1625/I	25	37.5	98	18	INOX
50.KC.2032/I	32	46	104	18	INOX
50.KC.2438/I	38	54	109	18	INOX
50.KC.3250/I	50	64	124	18	INOX
50.KC.4063/I	63	76.3	135	11	INOX
50.KC.4875/I	75	92.5	169	9	INOX
50.KC.64100/I	100	120	169	7	INOX
50.KC.1625/P		37.5			POLIPROPILENO
50.KC.3250/P	50	64	124	18	POLIPROPILENO
50.KC.4875/P	75	92.5	169	9	POLIPROPILENO

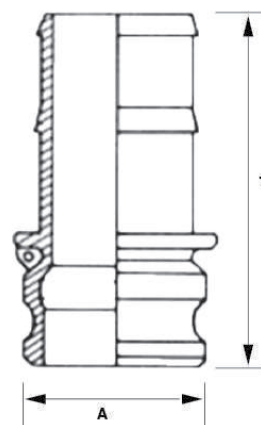
KAMLOCK TIPO-D

50.KD



CÓDIGO	ROSCA FÊMEA	B	J	PRESSÃO BAR	TIPO
50.KD.0808/A	1/2"	24.2	46	11	ALUMINIO
50.KD.1212/A	3/4"	32	49	18	ALUMINIO
50.KD.1616/A	1"	37.5	60	18	ALUMINIO
50.KD.2020/A	1.1/4"	46	70	18	ALUMINIO
50.KD.2424/A	1.1/2"	54	73	18	ALUMINIO
50.KD.3232/A	2"	64	79	18	ALUMINIO
50.KD.4040/A	2.1/2"	76.3	87	11	ALUMINIO
50.KD.4848/A	3"	92.5	92	9	ALUMINIO
50.KD.6464/A	4"	120	101	7	ALUMINIO
50.KD.8080/A	5"	146.5	188	5	ALUMINIO
50.KD.9696/A	6"	176.5	111	5"	ALUMINIO
50.KD.0808/I	1/2"	24.2	46	11	INOX
50.KD.1212/I	3/4"	32	49	18	INOX

CÓDIGO	ROSCA FÊMEA	B	J	PRESSÃO BAR	TIPO
50.KD.1616/I	1"	37.5	60	18	INOX
50.KD.2020/I	1.1/4"	46	70	18	INOX
50.KD.2424/I	1.1/2"	54	73	18	INOX
50.KD.3232/I	2"	64	79	18	INOX
50.KD.4040/I	2.1/2"	76.3	87	11	INOX
50.KD.4848/I	3"	92.5	92	9	INOX
50.KD.6464/I	4"	120	101	7	INOX
50.KD.1616/P		37.5			POLIPROPILENO
50.KD.3232/P	2"	64	79	18	POLIPROPILENO
50.KD.4848/P	3"	92.5	92	9	POLIPROPILENO

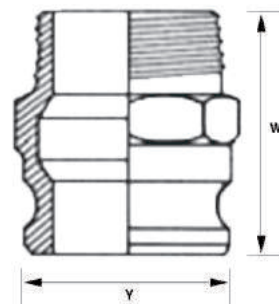
KAMLOCK TIPO-E
50.KE


CÓDIGO	TUBO	A	T	PRESSÃO BAR	TIPO
50.KE.96150/I					
50.KE.0812/A	12	23.8	62	11	ALUMINIO
50.KE.1219/A	20	32	76	18	ALUMINIO
50.KE.1625/A	25	37	92	18	ALUMINIO
50.KE.2032/A	32	45.5	98	18	ALUMINIO
50.KE.2438/A	38	53.5	102	18	ALUMINIO
50.KE.3250/A	50	63	117	18	ALUMINIO
50.KE.4063/A	63	76	129	11	ALUMINIO
50.KE.4875/A	75	91.5	153	9	ALUMINIO
50.KE.64100/A	100	119	168	7	ALUMINIO
50.KE.80125/A	125	146	188	5	ALUMINIO
50.KE.96150/A	150	176	230	5	ALUMINIO
50.KE.0812/I	12	23.8	62	11	INOX
50.KE.1219/I	20	32	76	18	INOX
50.KE.1625/I	25	37	92	18	INOX
50.KE.2032/I	32	45.5	98	18	INOX
50.KE.2438/I	38	53.5	102	18	INOX
50.KE.3250/I	50	63	117	18	INOX
50.KE.4063/I	63	76	129	11	INOX
50.KE.4875/I	75	91.5	153	9	INOX
50.KE.64100/I	100	119	168	7	INOX
50.KE.1625/P	25	37			POLIPROPILENO
50.KE.3250/P	50	63	117		POLIPROPILENO

CÓDIGO	TUBO	A	T	PRESSÃO BAR	TIPO
50.KE.4875/P	75	91.5	153		POLIPROPILENO

KAMLOCK TIPO-F MACHO R. MACHO

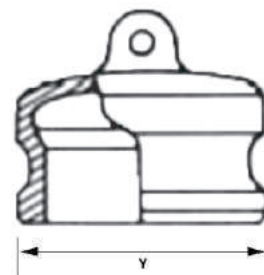
50.KF



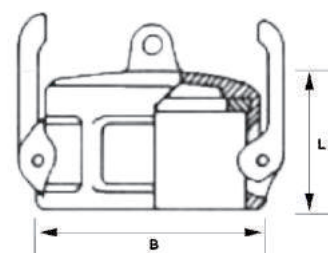
CÓDIGO	ROSCA MACHO	Y	W	PRESSÃO BAR	TIPO
50.KF.1616/P		37			
50.KF.0808/A	1/2"	23.8	52	11	ALUMINIO
50.KF.1212/A	3/4"	32	57	18	ALUMINIO
50.KF.1616/A	1"	37	69	18	ALUMINIO
50.KF.2020/A	1.1/4"	45.5	77	18	ALUMINIO
50.KF.2424/A	1.1/2"	53.5	78	18	ALUMINIO
50.KF.3232/A	2"	63	87	18	ALUMINIO
50.KF.4040/A	2.1/2"	76	98	11	ALUMINIO
50.KF.4848/A	3"	91.5	108	9	ALUMINIO
50.KF.6464/A	4"	119	118	7	ALUMINIO
50.KF.8080/A	5"	146	103	5	ALUMINIO
50.KF.9696/A	6"	176	108	5	ALUMINIO
50.KF.0808/I	1/2"	23.8	52	11	INOX
50.KF.1212/I	3/4"	32	57	18	INOX
50.KF.1616/I	1"	37	69	18	INOX
50.KF.2424/I	1.1/2"	53.5	78	18	INOX
50.KF.2020/I	1.1/4"	45.5	77	18	INOX
50.KF.3232/I	2"	63	87	18	INOX
50.KF.4040/I	2.1/2"	76	98	11	INOX
50.KF.4848/I	3"	91.5	108	9	INOX
50.KF.6464/I	4"	119	118	7	INOX
50.KF.3232/P	2"	63	87	18	POLIPROPILENO
50.KF.4848/P	3"	91.5	108	9	POLIPROPILENO

KAMLOCK TIPO-DP

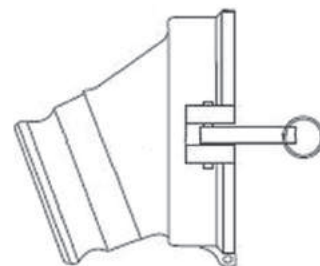
50.KDP



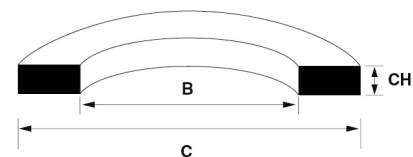
CÓDIGO	Y	PRESSÃO BAR	TIPO
50.KDP.08/A	23.8	11	ALUMINIO
50.KDP.12/A	32	18	ALUMINIO
50.KDP.16/A	37	18	ALUMINIO
50.KDP.20/A	45.5	18	ALUMINIO
50.KDP.24/A	53.5	18	ALUMINIO
50.KDP.32/A	63	18	ALUMINIO
50.KDP.40/A	76	11	ALUMINIO
50.KDP.48/A	91.5	9	ALUMINIO
50.KDP.64/A	119	7	ALUMINIO
50.KDP.80/A	146	5	ALUMINIO
50.KDP.96/A	176	5	ALUMINIO
50.KDP.08/I	23.8	11	INOX
50.KDP.12/I	32	18	INOX
50.KDP.16/I	37	18	INOX
50.KDP.20/I	45.5	18	INOX
50.KDP.24/I	53.5	18	INOX
50.KDP.32/I	63	18	INOX
50.KDP.40/I	76	11	INOX
50.KDP.16/P	37	18	POLIPROPILENO
50.KDP.48/I	91.5	9	INOX
50.KDP.64/I	119	7	INOX
50.KDP.32/P	63	18	POLIPROPILENO
50.KDP.48/P	91.5	9	POLIPROPILENO

KAMLOCK TIPO-DC
50.KDC


CÓDIGO	B	L	PRESSÃO BAR	TIPO
50.KDC.08/A	24.2	33	11	ALUMINIO
50.KDC.12/A	33	34	18	ALUMINIO
50.KDC.16/A	37.5	41	18	ALUMINIO
50.KDC.20/A	46	48	18	ALUMINIO
50.KDC.24/A	54	50	18	ALUMINIO
50.KDC.32/A	64	57	18	ALUMINIO
50.KDC.40/A	76.3	59	11	ALUMINIO
50.KDC.48/A	92.5	62	9	ALUMINIO
50.KDC.64/A	120	65	7	ALUMINIO
50.KDC.80/A	146.5	65	5	ALUMINIO
50.KDC.96/A	176.5	73	5	ALUMINIO
50.KDC.08/I	24.2	33	11	INOX
50.KDC.12/I	33	34	18	INOX
50.KDC.16/I	37.5	41	18	INOX
50.KDC.20/I	46	48	18	INOX
50.KDC.24/I	54	50	18	INOX
50.KDC.32/I	64	57	18	INOX
50.KDC.40/I	76.3	59	11	INOX
50.KDC.48/I	92.5	62	9	INOX
50.KDC.64/I	120	65	7	INOX
50.KDC.16/P	37.5			POLIPROPILENO
50.KDC.32/P	64	57	18	POLIPROPILENO
50.KDC.48/P	92.5	62	9	POLIPROPILENO

ADAPTADOR API / KAMLOCK
50.APIK


CÓDIGO	API FEMEA	KAMLOCK MACHO
50.APIK.6448/A		

JUNTAS - J
50.KJ


CÓDIGO	B	C	CH	TIPO	COR
50.KJ.08/E	18	26	3.5	EPDM	■
50.KJ.08/N	18	26	3.5	NBR	■
50.KJ.08/V	18	26	3.5	VITON	■
50.KJ.12/E	23	35	5.5	EPDM	■
50.KJ.12/N	23	35	5.5	NBR	■
50.KJ.12/V	23	35	5.5	VITON	■
50.KJ.16/E	27	40	6.5	EPDM	■
50.KJ.16/N	27	40	6.5	NBR	■
50.KJ.16/V	27	40	6.5	VITON	■
50.KJ.20/E	36	50	6.5	EPDM	■
50.KJ.20/N	36	50	6.5	NBR	■
50.KJ.20/V	36	50	6.5	VITON	■
50.KJ.24/E	43	56	6.5	EPDM	■
50.KJ.24/N	43	56	6.5	NBR	■
50.KJ.24/V	43	56	6.5	VITON	■
50.KJ.32/E	53	67	6.5	EPDM	■
50.KJ.32/N	53	67	6.5	NBR	■
50.KJ.32/V	53	67	6.5	VITON	■
50.KJ.40/E	66	80	6.5	EPDM	■
50.KJ.40/N	66	80	6.5	NBR	■
50.KJ.40/V	66	80	6.5	VITON	■
50.KJ.48/E	81	95	6.5	EPDM	■
50.KJ.48/N	81	95	6.5	NBR	■
50.KJ.48/V	81	95	6.5	VITON	■
50.KJ.64/E	110	124	6.5	EPDM	■
50.KJ.64/V	110	124	6.5	VITON	■
50.KJ.64/N	110	125	6.5	NBR	■
50.KJ.80/E	137	151	6.5	EPDM	■
50.KJ.80/N	137	151	6.5	NBR	■
50.KJ.80/V	137	151	6.5	VITON	■
50.KJ.96/E	165	180	6.5	EPDM	■
50.KJ.96/N	165	180	6.5	NBR	■
50.KJ.96/V	165	180	6.5	VITON	■

KAMLOCK TIPO-AA
50.KAA


	ROSCA	ROSCA	
CÓDIGO	MACHO	MACHO	TIPO
50.KAA.1616/A	1"	1"	ALUMINIO
50.KAA.2416/A	1"	1.1/2"	ALUMINIO

	ROSCA	ROSCA	
CÓDIGO	MACHO	MACHO	TIPO
50.KAA.2424/A	1.1/2"	1.1/2"	ALUMINIO
50.KAA.3224/A	1.1/2"	2"	ALUMINIO
50.KAA.2020/A	1.1/4"	1.1/4"	ALUMINIO
50.KAA.3232/A	2"	2"	ALUMINIO
50.KAA.4832/A	2"	3"	ALUMINIO
50.KAA.4848/A	3"	3"	ALUMINIO
50.KAA.6448/A	3"	4"	ALUMINIO
50.KAA.6464/A	4"	4"	ALUMINIO

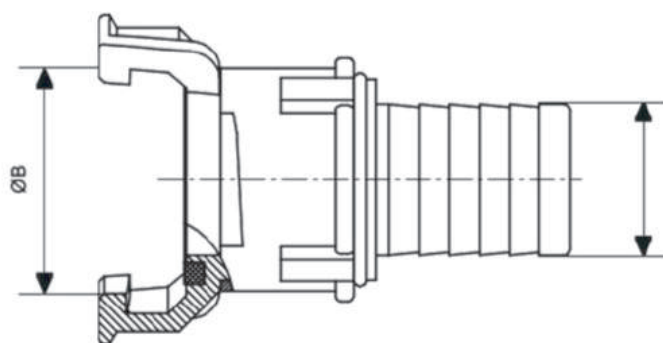
Kamlock Tipo-DA Red. Femea Macho Alumínio
50.KDA


	ROSCA	ROSCA					
CÓDIGO	FEMEA	MACHO	B	C	CH	CH1	TIPO
50.KDA.4832/A	3"	2"	92.5	68	62	63	ALUMINIO
50.KDA.6448/A	4"	3"	120	101	88	91.5	ALUMINIO

GUILLEMIN

GUILLEMIN C/ANEL MOD.A P/TUBO

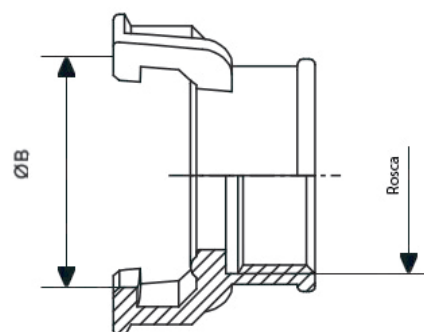
50.GA



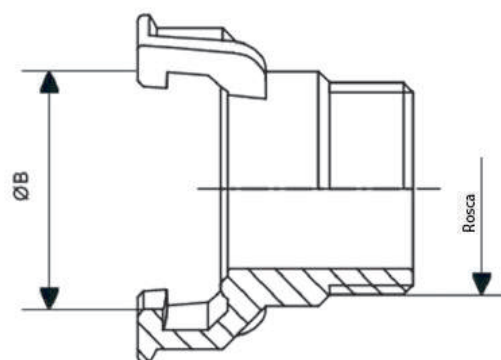
CÓDIGO	TUBO	TAMANHO	B	PRESSÃO BAR	TIPO
50.GA.2025/A	25	20	32	25	ALUMINIO
50.GA.2530/A	30	25	37.5	25	ALUMINIO
50.GA.4040/A	40	40	55	25	ALUMINIO
50.GA.3235/A	43	32		25	ALUMINIO
50.GA.4045/A	45	40	55	25	ALUMINIO
50.GA.5050/A	51	50	69	25	ALUMINIO
50.GA.5055/A	55	50	69	25	ALUMINIO
50.GA.6570/A	70	65	84	25	ALUMINIO
50.GA.8075/A	75	80	103	25	ALUMINIO
50.GA.8075/I	75	80	103	25	INOX
50.GA.8080/A	80	80	103	25	ALUMINIO
50.GA.8090/A	90	80	103	25	ALUMINIO
50.GA.100100/A	100	100	123	25	ALUMINIO

GUILLEMIN S/ANEL MOD.B R/FEMEA

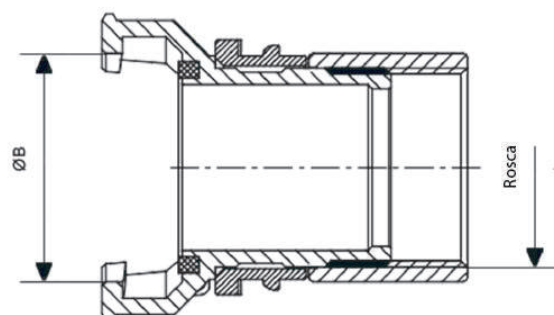
50.GB



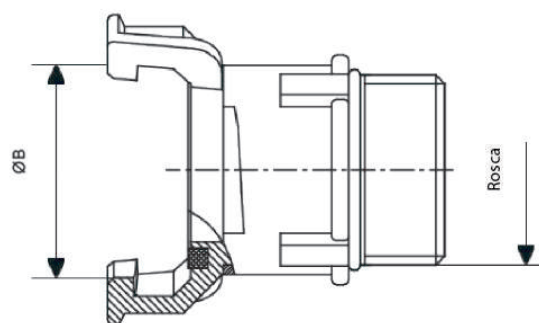
CÓDIGO	TAMANHO	ROSCA FÊMEA	B	PRESSÃO BAR	TIPO
50.GB.2012/A	20	3/4"	32	25	ALUMINIO
50.GB.2516/A	25	1"	37.5	25	ALUMINIO
50.GB.3220/A	32	1.1/4"	42.5	25	ALUMINIO
50.GB.4024/A	40	1.1/2"	55	25	ALUMINIO
50.GB.5032/A	50	G 2"	69	25	ALUMINIO
50.GB.6540/A	65	G 2 1/2"	84	25	ALUMINIO
50.GB.8048/A	80	G 3"	103	25	ALUMINIO
50.GB.8048/I	80	G 3"	103	25	INOX
50.GB.10064/A	100	4"	123	25	ALUMINIO

GUILLEMIN S/ANEL MOD.C R/MACHO
50.GC


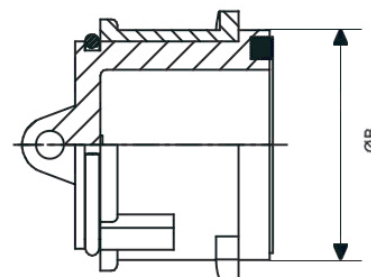
CÓDIGO	TAMANHO	ROSCA MACHO	B	PRESSÃO BAR	TIPO
50.GC.2012/A	20	3/4"	32	25	ALUMINIO
50.GC.2516/A	25	1"	37.5	25	ALUMINIO
50.GC.3220/A	32	1.1/4"	42.5	25	ALUMINIO
50.GC.4024/A	40	1.1/2"	55	25	ALUMINIO
50.GC.5032/A	50	2"	69	25	ALUMINIO
50.GC.6540/A	65	2.1/2"	84	25	ALUMINIO
50.GC.8048/A	80	3"	103	25	ALUMINIO
50.GC.8048/I	80	3"	103	25	ALUMINIO
50.GC.10064/A	100	4"	103	25	ALUMINIO

GUILLEMIN C/ANEL MOD.D R/FEMEA
50.GD


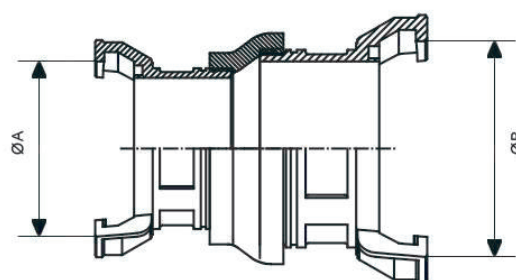
CÓDIGO	TAMANHO	ROSCA FÊMEA	B	PRESSÃO BAR	TIPO
50.GD.2012/A	20	3/4 "	32	25	ALUMINIO
50.GD.2516/A	25	1"	37.5	25	ALUMINIO
50.GD.3220/A	32	1.1/4"	42.5	25	ALUMINIO
50.GD.4024/A	40	1.1/2"	55	25	ALUMINIO
50.GD.5032/A	50	2"	69	25	ALUMINIO
50.GD.6540/A	65	2.1/2"	84	25	ALUMINIO
50.GD.8048/A	80	3"	103	25	ALUMINIO
50.GD.8048/I	80	3"	103	25	INOX
50.GD.10064/A	100	4"	123	25	ALUMINIO

GUILLEMIN C/ANEL MOD.E R/MACHO
50.GE


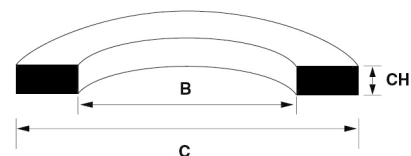
CÓDIGO	TAMANHO	ROSCA MACHO	B	PRESSÃO BAR	TIPO
50.GE.2012/A	20	3/4"	32	25	ALUMINIO
50.GE.2516/A	25	1"	37.5	25	ALUMINIO
50.GE.3220/A	32	1.1/4"	42.5	25	ALUMINIO
50.GE.4024/A	40	1.1/2"	55	25	ALUMINIO
50.GE.5032/A	50	2"	69	25	ALUMINIO
50.GE.6540/A	65	2.1/2"	84	25	ALUMINIO
50.GE.8048/A	80	3"	103	25	ALUMINIO
50.GE.8048/I	80	3"	103	25	INOX
50.GE.10064/A	100	4"	123	25	ALUMINIO

GUILLEMIN TAMPÃO C/ANEL MOD.T
50.GT


CÓDIGO	TAMANHO	B	TIPO
50.GT.20/A	20	68	ALUMINIO
50.GT.25/A	25	68	ALUMINIO
50.GT.32/A	32	68	ALUMINIO
50.GT.40/A	40	68	ALUMINIO
50.GT.50/A	50	68	ALUMINIO
50.GT.65/A	65	83	ALUMINIO
50.GT.080/A	80	101	ALUMINIO
50.GT.080/I	80	101	INOX
50.GT.100/A	100	121	ALUMINIO

GUILLEMIN REDUÇÃO C/ANEL MOD.R
50.GR


CÓDIGO	TAMANHO	A	B	PRESSÃO BAR	TIPO
50.GR.4065/A	65 x 40	55	84	25	ALUMINIO
50.GR.6580/A	100 x 65	84	123	25	ALUMINIO
50.GR.65100/A	100 x 65	84	123	25	ALUMINIO
50.GR.80100/A	100 x 80	103	123	25	ALUMINIO

GUILLEMIN JUNTA MOD-J
50.GJ


CÓDIGO	B	C	CH	TIPO	COR
50.Gj.020/EP	24	34	5	EPDM	□
50.Gj.020	24	34	5	NBR	■
50.Gj.025/EP	28	40	6	EPDM	□
50.Gj.025	28	40	6	NBR	■
50.Gj.032/EP	38	50	6	EPDM	□
50.Gj.032	38	50	6	NBR	■
50.Gj.040/EP	44	56	6	EPDM	□
50.Gj.040	44	56	6	NBR	■
50.Gj.050/EP	55	67	6	EPDM	□

CÓDIGO	B	C	CH	TIPO	COR
50.Gj.050	55	67	6	NBR	■
50.Gj.050/V	55	67	6	Viton	□
50.Gj.065/EP	68	80	6	EPDM	◐
50.Gj.065	68	80	6	NBR	■
50.Gj.080/EP	83	95	6	EPDM	□
50.Gj.080	83	95	6	NBR	■
50.Gj.080/V	83	95	6	Viton	□
50.Gj.100/EP	112	124	6	EPDM	◐
50.Gj.100	112	124	6	NBR	■

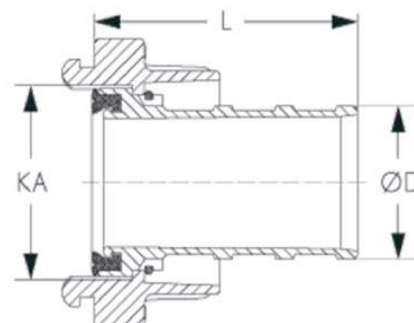
ABRAÇ. SEGURANÇA
50.AG


CÓDIGO	DI	CURSO
50.AG.13/5	13 x 5	22 - 24
50.AG.19/6	19 x 6	30 - 33
50.AG.25/6	25 x 6	36 - 39
50.AG.32/6	32 x 6	43 - 46
50.AG.38/6.5	38 x 6.5	50 - 52
50.AG.38/8	38 x 8	53 - 56
50.AG.38/8/l	38 x 8	53 - 56
50.AG.40/7	40 x 7	53 - 56
50.AG.50/8	50 x 8	64 - 67
50.AG.50/8/l	50 x 8	64 - 67
50.AG.63/8	63 x 8	78 - 82
50.AG.63/8/l	63 x 8	78 - 82
50.AG.75/8	75 x 8	89 - 93
50.AG.75/8/l	75 x 8	89 - 93
50.AG.80/8	80 x 8	94-97
50.AG.100/10	100 x 10	118 - 122
50.AG.100/8	100 x 8	114 - 119
50.AG.100/8/l	100 x 8	114 - 119

STORZ

ACOPL. STORZ ALUMÍNIO

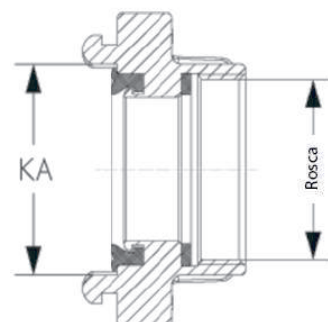
50.SB



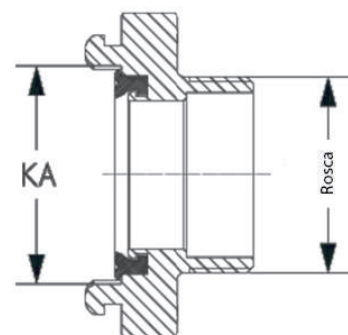
CÓDIGO	TAMANHO	TUBO	L	KA	TIPO
50.SB.148125/A		125	180	148	ALUMÍNIO
50.SB.2519/A	25	21/19	60	31	ALUMÍNIO
50.SB.2525/A	25	25	53	31	ALUMÍNIO
50.SB.5225/A	52	25	90	66	ALUMÍNIO
50.SB.5232/A	52	32	90	66	ALUMÍNIO
50.SB.5238/A	52	38	90	66	ALUMÍNIO
50.SB.5240/A	52	40	90	66	ALUMÍNIO
50.SB.5245/A	52	45	90	66	ALUMÍNIO
50.SB.5252/A	52	52	90	66	ALUMÍNIO
50.SB.5260/A	52	60	90	66	ALUMÍNIO
50.SB.7565/A	75	65	125	89	ALUMÍNIO
50.SB.7570/A	75	70	125	89	ALUMÍNIO
50.SB.7575/A	75	75	125	89	ALUMÍNIO
50.SB.7580/A	75	80	125	89	ALUMÍNIO
50.SB.11090/A	110	90	170	133	ALUMÍNIO
50.SB.110100/A	110	100	170	133	ALUMÍNIO
50.SB.110110/A	110	110	170	133	ALUMÍNIO
50.SB.160150/A	160	150	180	160	ALUMÍNIO

ACOPL. STORZ R.FEMEA ALUMÍNIO

50.SC

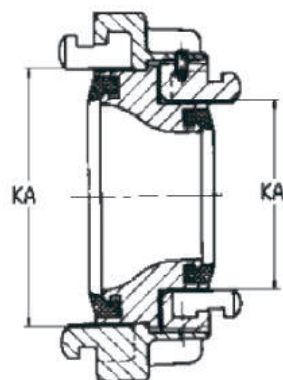


CÓDIGO	TAMANHO	ROSCA FÊMEA	KA	TIPO
50.SC.52SI/A				ALUMINIO
50.SC.5228/A		1.3/4"		ALUMINIO
50.SC.2516/A	25	1"	31	ALUMINIO
50.SC.2508/A	25	1/2"	31	ALUMINIO
50.SC.2512/A	25	3/4"	31	ALUMINIO
50.SC.5224/A	52	1.1/2"	66	ALUMINIO
50.SC.5220/A	52	1.1/4"	66	ALUMINIO
50.SC.5232/A	52	2"	66	ALUMINIO
50.SC.5240/A	52	2.1/2"	66	ALUMINIO
50.SC.7532/A	75	2"	89	ALUMINIO
50.SC.7540/A	75	2.1/2"	89	ALUMINIO
50.SC.7548/A	75	3"	89	ALUMINIO
50.SC.11064/A	110	4"	133	ALUMINIO
50.SC.14880/A	125	5"	148	ALUMINIO
50.SC.16096/A	150	6"	160	ALUMINIO

ACOPL. STORZ R.MACHO- ALUMÍNIO
50.SD


CÓDIGO	TAMANHO	ROSCA MACHO	KA	TIPO
50.SD.52SI/A				ALUMINIO
50.SD.5220/A		1.1/4"		ALUMINIO
50.SD.2516/A	25	1"	31	ALUMINIO
50.SD.2512/A	25	3/4"	31	ALUMINIO
50.SD.5224/A	52	1.1/2"	66	ALUMINIO
50.SD.5228/A	52	1.3/4"	66	ALUMINIO
50.SD.5240/A	52	2 1/2"	66	ALUMINIO
50.SD.5232/A	52	2"	66	ALUMINIO
50.SD.7540/A	75	2 1/2"	89	ALUMINIO
50.SD.7532/A	75	2"	89	ALUMINIO
50.SD.7548/A	75	3"	89	ALUMINIO
50.SD.11064/A	110	4"	133	ALUMINIO

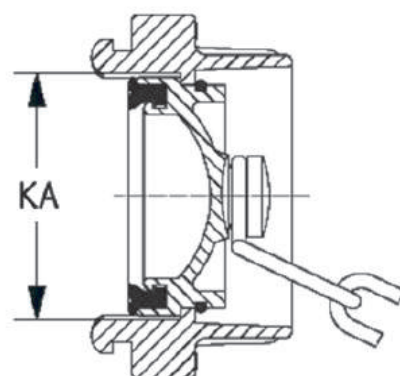
STORZ REDUÇÃO B ALUMÍNIO
50.SR



CÓDIGO	KA	TIPO
50.SR.5225/A	31	ALUMINIO
50.SR.7552/A	66	ALUMINIO
50.SR.11075/A	89	ALUMINIO

STORZ TAMPÃO ALUMÍNIO

50.ST



CÓDIGO	TIPO	TIPO	TAMANHO
50.ST.25/A	ALUMINIO	25-A	0,00
50.ST.52/A	ALUMINIO	52-A	0,00
50.ST.75/A	ALUMINIO	75-A	0,00
50.ST.110/A	ALUMINIO	110-A	0,00
50.ST.148/A	ALUMINIO	148-A	0,00

JUNTA BRANCA P/STORZ A

50.SJ



CÓDIGO	KA	TAMANHO	TIPO	COR
50.SJ.25/B	31	25	NBR	☐
50.SJ.52/B	66	52	NBR	☐
50.SJ.52/S	66	52	SILICONE	
50.SJ.75/B	89	75	NBR	☐
50.SJ.75/S	89	75	SILICONE	☐
50.SJ.110/B	133	110	NBR	☐

CHAVE P/ STORZ

50.SK.01



CÓDIGO	DESCRIÇÃO
50.SK.01	CHAVE P/ STORZ A110/B75/C52 FE

BETÃO

ACOPLAMENTO FEM P/BETAO

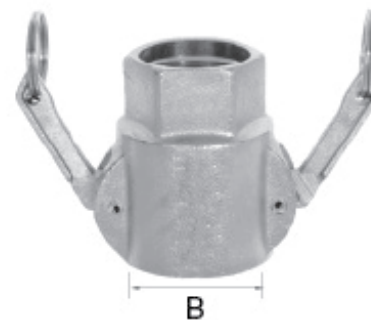
50.BA


CÓDIGO	PRESSÃO BAR	T	B
50.BA.3625/22	50	25	36
50.BA.4225/22	50	25	42
50.BA.5135/23	50	35	51
50.BA.6450/23	50	50	64

ACOPLAMENTO MACHO P/BETAO

50.BB


CÓDIGO	PRESSÃO BAR	T	A	B
50.BB.3525/22	50	25	22	35
50.BB.4125/22	50	25	22	41
50.BB.4925/23	50	25	23,5	49,5
50.BB.6335/22	50	35	22	63
50.BB.4935/23	50	35	23,5	49,5
50.BB.6350/23	50	50	23,5	63

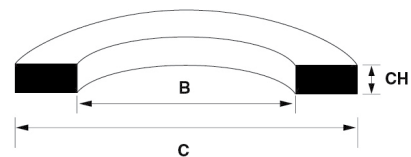
ACOPLAMENTO FEM P/BETAO**50.BC**

CÓDIGO	ROSCA	PRESSÃO BAR	B
50.BC.3616/22	1"	50	36
50.BC.4216/22	1"	50	42
50.BC.5116/23	1"	50	51
50.BC.5124/23	1.1/2"	50	51
50.BC.5120/23	1.1/4"	50	51
50.BC.6432/23	2"	50	64

ACOPLAMENTO MACHO P/BETAO**50.BD**

CÓDIGO	ROSCA	PRESSÃO BAR	B	KG/UNI
50.BD.3516/22	1"	50	35	0.367
50.BD.4116/22	1"	50	41	0.367
50.BD.4916/23	1"	50	49.5	0.562
50.BD.4924/23	1.1/2"	50	49.5	0.454
50.BD.4920/23	1.1/4"	50	49.5	0.454
50.BD.6332/23	2"	50	63	0.613

JUNTA P/ ACOPLAMENTO DE BETAO**50.BV**



CÓDIGO	C	B	CH
50.BV.36	36	24.5	
50.BV.42	42	28	
50.BV.51	53	38	
50.BV.63	60	50	

MANIPULO P/ ACOPL. BETAO

50.BE



CÓDIGO

50.BE.01

CAVILHA P/ ACOPL. BETAO

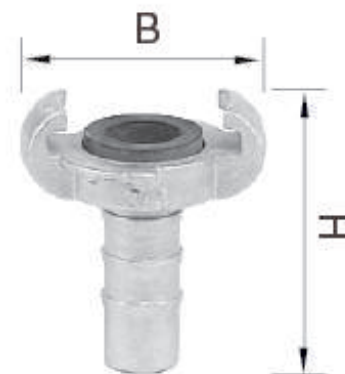
50.BF



CÓDIGO

50.BF.01

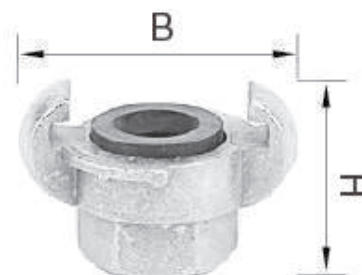
AR

LIGADOR DIN 3483
50.AA


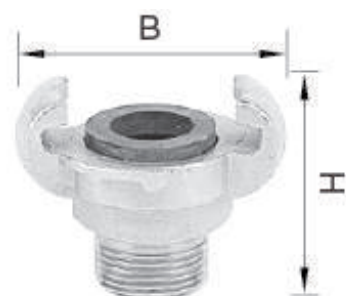
CÓDIGO	TUBO	B	H
50.AA.0662	3/8"	62	68.5
50.AA.0462		62	68.5
50.AA.0862	1/2"	62	77.5
50.AA.1262	3/4"	62	73.0
50.AA.1662	1"	62	70.0
50.AA.2062	1.1/4"	62	90

LIGADOR C/GOLA DIN 3483
50.AF


CÓDIGO	TUBO	B	H
50.AF.1662	1"	62	85
50.AF.0862	1/2"	62	76
50.AF.2062	1.1/4"	62	
50.AF.1262	3/4"	62	85
50.AF.0662	3/8"	62	

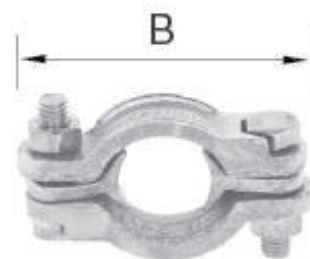
LIGADOR R/FEMEA DIN 3482
50.AB


CÓDIGO	ROSCA FEMEA	B	H
50.AB.0662	3/8	62	46.0
50.AB.0862	1/2"	62	46.0
50.AB.1262	3/4"	62	40.0
50.AB.1662	1"	62	42.0

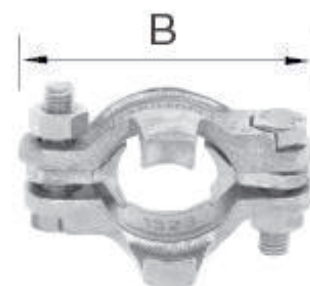
LIGADOR R/MACHO DIN 3483
50.AC


CÓDIGO	ROSCA MACHO	B	H
50.AC.0662	3/8	62	53.0
50.AC.0862	1/2"	62	53.0
50.AC.1262	3/4"	62	55.0
50.AC.1662	1"	62	53

ABRAÇADEIRA DIN-20039 A
50.AD



CÓDIGO	B	CURSO	DI (in)	KG/UNI
50.AD.061722	61	17 - 22	3/8"	0.101
50.AD.082029	61.5	20 - 29	1/2"	0.121
50.AD.122835	71.0	28 - 34	3/4"	0.163
50.AD.163240	81	32 - 40	1"	0.185
50.AD.203949	92.5	39 - 49	1.1/4"	0.221
50.AD.244860	105 mm	48 - 60	1 1/2"	0.276
50.AD.326076	117	60 - 76	2"	0.314
50.AD.407794	150.5	77 - 94	2.1/2"	0.605
50.AD.4894115	163	94 - 115	3"	0.594

ABRAÇADEIRA C/ GARRA DIN-20039 B
50.AH


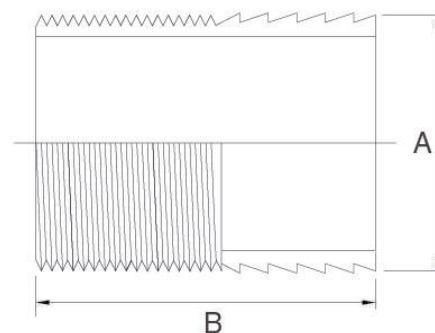
CÓDIGO	TUBO	B	CURSO
50.AH.082229	1/2"	63	22-29
50.AH.122832	3/4"	70	28-33
50.AH.163542	1"	84	35-42
50.AH.204047	1.1/4"		40-47

VEDANTE MULLENBACH
50.AV

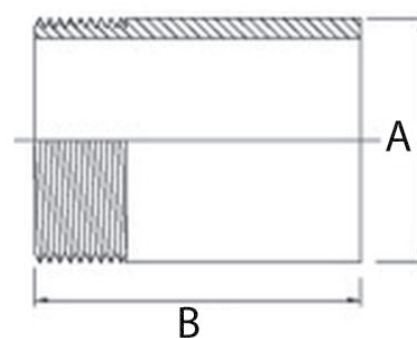


CÓDIGO	I	A	H
50.AV.2020	20.0	34	11 mm
50.AV.2020/V	34	20	10 mm

ACESSÓRIOS

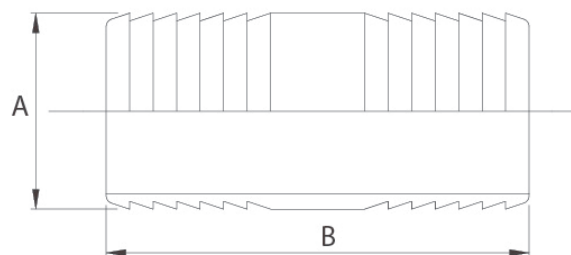
ESPIGA P/ SOLDAR FERRO
50.ES


CÓDIGO	A	B
50.ES.75/F	75	105
50.ES.090/F	90	110
50.ES.100/F	100	110
50.ES.110/F	110	120
50.ES.125/F	125	130
50.ES.150/F	150	140
50.ES.250/F	250	250

PONTA ROSCADA MACHO P/ SOLDAR FERRO
50.PR


CÓDIGO	A	B
50.PR.48/F	3"	90
50.PR.64/F	4	115
50.PR.80/F	5"	120
50.PR.96/F	6"	125

ESPIGA T/T FERRO
50.ET



CÓDIGO	A	B
50.ET.50/F	50	120
50.ET.60/F	60	120
50.ET.65/F	65	130
50.ET.75/F	75	180
50.ET.90/F	90	180
50.ET.100/F	100	200
50.ET.110/F	110	200
50.ET.125/F	125	240
50.ET.150/F	150	250

COMBUSTIVEL

PONT. FEMEA BSP DIN-2817
50.HF


	Ø TUBO		ROSCA	
CÓDIGO	in	mm		TIPO
50.HF.2438/I	1.1/2"	38.1	1.1/2"	INOX
50.HF.3250/I	2"	50.8	2"	INOX
50.HF.4063/I	2.1/2"	63.5	2.1/2"	INOX
50.HF.4875/I	3"	76.2	3"	INOX
50.HF.64100/I	4"	101.6	4"	INOX
50.HF.2438/L	1.1/2"	38.1	1.1/2"	LATÃO
50.HF.3250/L	2"	50.8	2"	LATÃO
50.HF.4063/L	2.1/2"	63.5	2.1/2"	LATÃO
50.HF.4875/L	3"	76.2	3"	LATÃO
50.HF.64100/L	4"	101.6	4"	LATÃO

PONT. MACHO BSP DIN-2817
50.HM


	Ø TUBO		ROSCA	
CÓDIGO	in	mm		TIPO
50.HM.2438/I	1.1/2"	38.1	1.1/2"	INOX
50.HM.3250/I	2"	50.8	2"	INOX
50.HM.4063/I	2.1/2"	63.5	2.1/2"	INOX
50.HM.4875/I	3"	76.2	3"	INOX
50.HM.64100/I	4"	101.6	4"	INOX
50.HM.2438/L	1.1/2"	38.1	1.1/2"	LATÃO
50.HM.3250/L	2"	50.8	2"	LATÃO
50.HM.4063/L	2.1/2"	63.5	2.1/2"	LATÃO
50.HM.4875/L	3"	76.2	3"	LATÃO
50.HM.64100/L	4"	101.6	4"	LATÃO

ABRAÇ. SEGURANÇA
50.AG


CÓDIGO	DI	CURSO
50.AG.13/5	13 x 5	22 - 24
50.AG.19/6	19 x 6	30 - 33
50.AG.25/6	25 x 6	36 - 39
50.AG.32/6	32 x 6	43 - 46
50.AG.38/6.5	38 x 6.5	50 - 52
50.AG.38/8	38 x 8	53 - 56
50.AG.38/8/I	38 x 8	53 - 56
50.AG.40/7	40 x 7	53 - 56
50.AG.50/8	50 x 8	64 - 67
50.AG.50/8/I	50 x 8	64 - 67
50.AG.63/8	63 x 8	78 - 82
50.AG.63/8/I	63 x 8	78 - 82
50.AG.75/8	75 x 8	89 - 93
50.AG.75/8/I	75 x 8	89 - 93
50.AG.80/8	80 x 8	94-97
50.AG.100/10	100 x 10	118 - 122
50.AG.100/8	100 x 8	114 - 119
50.AG.100/8/I	100 x 8	114 - 119

PONT. REUSAVEL FEMEA BSP P/ TUBO COMBUSTIVEL
50.FF


CÓDIGO	Ø TUBO		ROSCA
	in	mm	
50.FF.1616	1"	25.4	1"
50.FF.1212	3/4"	19.5	3/4"

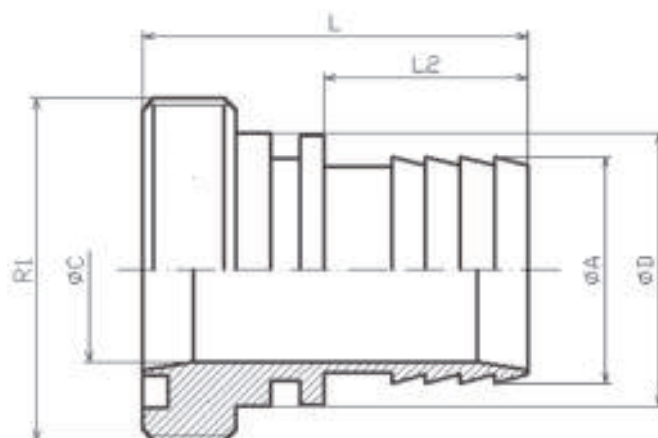
PONT. REUSAVEL MACHO BSP P/ TUBO COMBUSTÍVEL**50.FM**

CÓDIGO	Ø TUBO		ROSCA
	in	mm	
50.FM.1616	1"	25.4	1"
50.FM.1212	3/4"	19.5	3/4"

ACESSÓRIOS INOX DIN / SMS / CLAMP

PONTEIRA MACHO SMS INOX 316

50.SMS.M

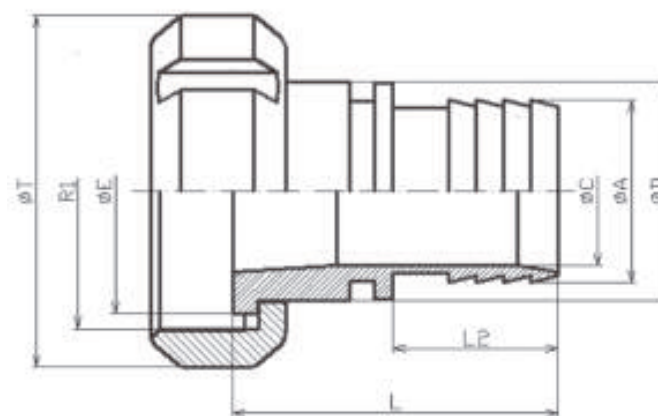


PONTEIRA FÊMEA SMS INOX 316

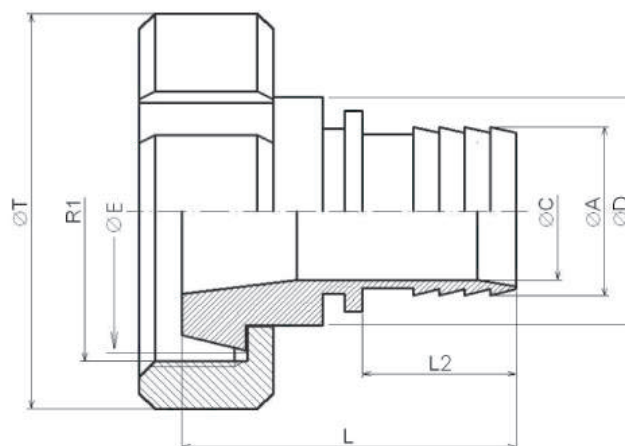
50.SMS.F

FÊMEA 304 INOX

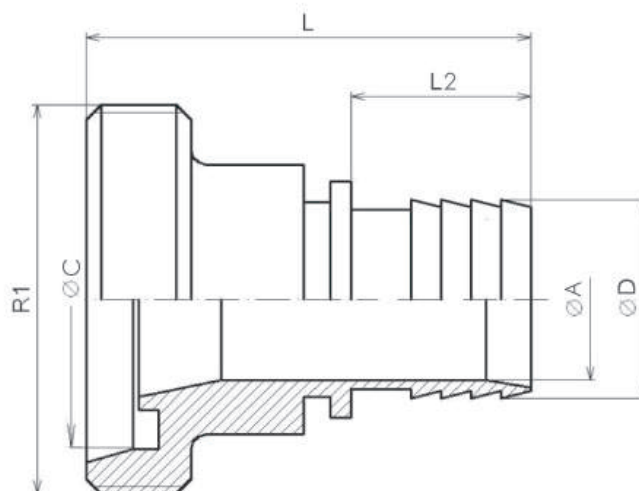
CORPO 316 INOX



CÓDIGO	DI (mm)	A	C	E	L	L2	T	D	ROSCA
50.SMS.F100								0	
50.SMS.F25	25	26.5	21.5	35.7	51	24.5	51	31	40x 1/6"
50.SMS.F32	32	32	27	43.5	56.4	32	60	39	48 X 1/6"
50.SMS.F38	38	37.2	33	55	64.5	32.5	74	47	60 x 1/6"
50.SMS.F50	50	51.8	44.5	65	74.5	41.5	84	59.4	70 x 1/6"
50.SMS.F63	63	63.5	56	80	90.8	53	100	73	85 x 1/6"
50.SMS.F75	75	78	71		95.8	58	114	86	98 x 1/6"

PONTEIRA FÊMEA DIN INOX 316
50.DIN.F
FÊMEA 304 INOX
CORPO 316 INOX


CÓDIGO	DI (mm)	A	C	E	L	L2	R1
50.DIN.F100							
50.DIN.F20	20	20	16	54	48.3	24	44 X 1/6"
50.DIN.F25	25	26.5	21.5	63	52.5	24.5	52 x 1/6"
50.DIN.F32	32	32	27	70	64.3	32	58 x 1.6"
50.DIN.F38	38	37.2	33	78	65.5	32.5	65 x 1/6"
50.DIN.F50	50	51.8	44.5	92	76.5	41.5	78 x 1/6"
50.DIN.F63	63	63	56	112	93.6	53	95 x 1/6"
50.DIN.F75	75	75	68	127	102.8	58	110 x 1/4"

PONTEIRA MACHO DIN INOX 316
50.DIN.M


CÓDIGO	DI (mm)	A	C	D	L	L2	ROSCA
50.DIN.M20				0			

CÓDIGO	DI (mm)	A	C	D	L	L2	ROSCA
50.DIN.M63		63	56	76	98.8	53	95 x 1/6"
50.DIN.M25	25	26.5	21.5	36	59.5	24.5	52 x 1/6"
50.DIN.M32	32	32	27	45	71.3	32	58 x 1/6"
50.DIN.M38	38	37.2	33	48	69.5	32.5	65 x 1/6"
50.DIN.M50	40	39.5	34	48	68.3	31	78 x 1/6"
50.DIN.M75	75	75	68	87	110.8	58	110 x 1/4"

PONTEIRA TRI-CLAMP INOX-316
50.TRI

CÓDIGO

50.TRI.0625

50.TRI.1325

50.TRI.1350

50.TRI.1925

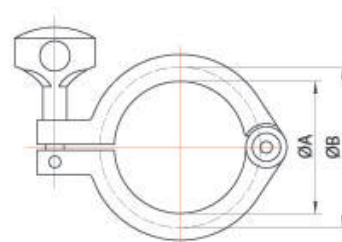
50.TRI.1950

50.TRI.2550

50.TRI.4050

50.TRI.5064

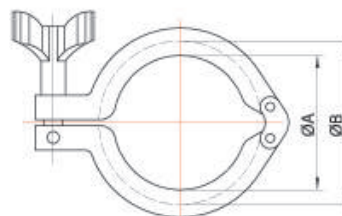
50.TRI.6377

ABRAÇADEIRA 1-PINO TRI-CLAMP INOX-304
50.TRIA

CÓDIGO
A
B

50.TRIA.25

20

28

ABRAÇADEIRA 2-PINOS TRI-CLAMP INOX-304
50.TRIAD


CÓDIGO	A	B
50.TRIAD.50	44.4	
50.TRIAD.64	57.8	
50.TRIAD.77	71.4	

VED. P/ TRI-CLAMP SILICONE (DN25) 23X50X5,5
50.TRIV

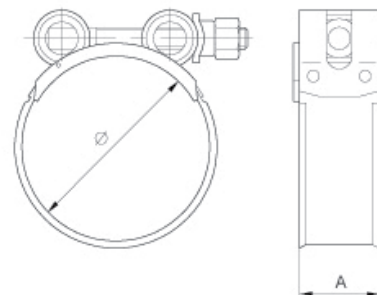

CÓDIGO
50.TRIV.25/S
50.TRIV.50/S
50.TRIV.64/S

ABRAÇ. SEGURANÇA
50.AG


CÓDIGO	DI	CURSO
50.AG.13/5	13 x 5	22 - 24
50.AG.19/6	19 x 6	30 - 33
50.AG.25/6	25 x 6	36 - 39
50.AG.32/6	32 x 6	43 - 46
50.AG.38/6.5	38 x 6.5	50 - 52
50.AG.38/8	38 x 8	53 - 56
50.AG.38/8/l	38 x 8	53 - 56
50.AG.40/7	40 x 7	53 - 56
50.AG.50/8	50 x 8	64 - 67
50.AG.50/8/l	50 x 8	64 - 67
50.AG.63/8	63 x 8	78 - 82

CÓDIGO	DI	CURSO
50.AG.63/8/I	63 x 8	78 - 82
50.AG.75/8	75 x 8	89 - 93
50.AG.75/8/I	75 x 8	89 - 93
50.AG.80/8	80 x 8	94-97
50.AG.100/10	100 x 10	118 - 122
50.AG.100/8	100 x 8	114 - 119
50.AG.100/8/I	100 x 8	114 - 119

ABRAÇADEIRAS

ABRAÇADEIRA SUPER
12.03


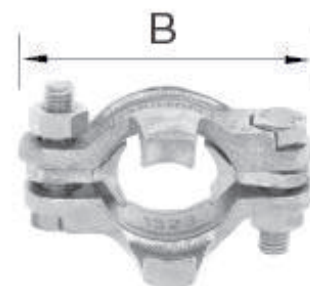
CÓDIGO	APLICAÇÃO	A
12.03.017	017-019	18
12.03.020	020-022	18
12.03.023	023-025	18
12.03.026	026-028	18
12.03.029	029-031	18
12.03.032	032-035	20
12.03.036	036-039	20
12.03.040	040-043	20
12.03.044	044-047	20
12.03.048	048-051	20
12.03.052	052-055	20
12.03.056	056-059	20
12.03.060	060-063	20
12.03.064	064-067	25
12.03.068	068-073	25
12.03.074	074-079	25
12.03.080	080-085	25
12.03.086	086-091	25
12.03.092	092-097	25
12.03.098	098-103	25
12.03.104	104-112	25
12.03.113	113-121	25
12.03.122	122-130	25
12.03.131	131-139	25
12.03.140	140-148	25
12.03.149	149-161	25
12.03.162	162-174	25
12.03.175	175-187	25
12.03.188	188-200	25
12.03.201	201-213	25
12.03.214	214-226	25
12.03.227	227-239	25
12.03.240	240-255	30
12.03.250	250-265	30

CÓDIGO	APLICAÇÃO	A
12.03.260	260-275	30
12.03.275	275-290	30
12.03.290	290-305	30
12.03.320	320-335	30
12.03.350	350-365	30
12.03.375	375-390	30
12.03.390	390-405	30

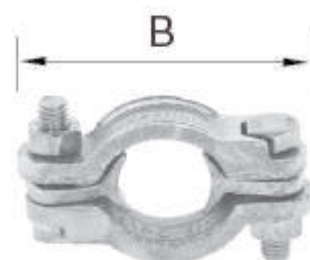
ABRAÇ. SEGURANÇA
50.AG


CÓDIGO	DI	CURSO
50.AG.13/5	13 x 5	22 - 24
50.AG.19/6	19 x 6	30 - 33
50.AG.25/6	25 x 6	36 - 39
50.AG.32/6	32 x 6	43 - 46
50.AG.38/6.5	38 x 6.5	50 - 52
50.AG.38/8	38 x 8	53 - 56
50.AG.38/8/I	38 x 8	53 - 56
50.AG.40/7	40 x 7	53 - 56
50.AG.50/8	50 x 8	64 - 67
50.AG.50/8/I	50 x 8	64 - 67
50.AG.63/8	63 x 8	78 - 82
50.AG.63/8/I	63 x 8	78 - 82
50.AG.75/8	75 x 8	89 - 93
50.AG.75/8/I	75 x 8	89 - 93
50.AG.80/8	80 x 8	94-97
50.AG.100/10	100 x 10	118 - 122
50.AG.100/8	100 x 8	114 - 119
50.AG.100/8/I	100 x 8	114 - 119

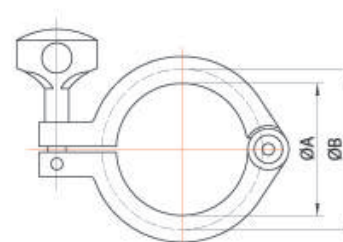
ABRAÇADEIRA C/ GARRA DIN-20039 B
50.AH



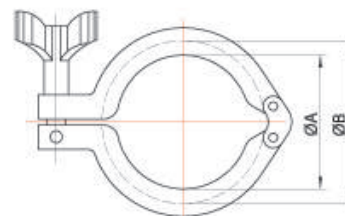
CÓDIGO	TUBO	B	CURSO
50.AH.082229	1/2"	63	22-29
50.AH.122832	3/4"	70	28-33
50.AH.163542	1"	84	35-42
50.AH.204047	1.1/4"		40-47

ABRAÇADEIRA DIN-20039 A
50.AD


CÓDIGO	B	CURSO	DI (in)	KG/UNI
50.AD.061722	61	17 - 22	3/8"	0.101
50.AD.082029	61.5	20 - 29	1/2"	0.121
50.AD.122835	71.0	28 - 34	3/4"	0.163
50.AD.163240	81	32 - 40	1"	0.185
50.AD.203949	92.5	39 - 49	1.1/4"	0.221
50.AD.244860	105 mm	48 - 60	1 1/2"	0.276
50.AD.326076	117	60 - 76	2"	0.314
50.AD.407794	150.5	77 - 94	2.1/2"	0.605
50.AD.4894115	163	94 - 115	3"	0.594

ABRAÇADEIRA 1-PINO TRI-CLAMP INOX-304
50.TRIA


CÓDIGO	A	B
50.TRIA.25	20	28

ABRAÇADEIRA 2-PINOS TRI-CLAMP INOX-304
50.TRIAD


CÓDIGO	A	B
50.TRIAD.50	44.4	53.6
50.TRIAD.64	57.8	67.0
50.TRIAD.77	71.4	80.6

CHAVE P/ STORZ

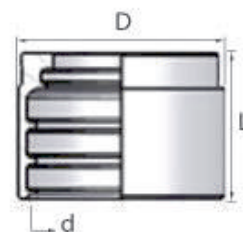
CHAVE P/ STORZ

50.SK.01

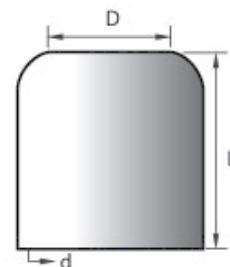


CÓDIGO	DESCRIÇÃO
50.SK.01	CHAVE P/ STORZ A110/B75/C52 FE

CAMISAS E CAPSULAS

CAMISA INDUST. INOX-316
50.102


	TUBO	DIMENSÕES		
CÓDIGO	in	D	L	d
50.102.25/39	1"		31.5	39
50.102.13/23	1/2"		29.50	23.5
50.102.38/50	1.1/2"		42	50.50
50.102.38/52	1.1/2"		42	52.5
50.102.32/48	1.1/4"			48.5
50.102.32/45	1.1/4"		41	45.5
50.102.50/65	2"		50	65
50.102.50/69	2"		50	68.5
50.102.65/80	2.1/2"		61	80
50.102.75/94	3"		66	94
50.102.19/33	3/4"		31.5	32.95

CAPSULA ALUMINIO
50.104


	TUBO	DIMENSÕES		
CÓDIGO	in	D	L	d
50.104.2540	1"	31	58	40
50.104.4057	1.1/2"	43.5	50	56.5
50.104.3247	1.1/4"	35	45.5	46
50.104.5066	2"	55	63	69.5

	TUBO	DIMENSÕES		
CÓDIGO	in	D	L	d
50.104.6582	2.1/2"			
50.104.6589	2.1/2"	72.5	55.5	88
50.104.80102	3"	91	76	101
50.104.100124	4"	110	86	122

ÍNDICE

A

ABRAÇ. SEGURANÇA 35, 50, 56, 59
ABRAÇADEIRA 1-PINO TRI-CLAMP INOX-304 55, 60
ABRAÇADEIRA 2-PINOS TRI-CLAMP INOX-304 55, 61
ABRAÇADEIRA C/ GARRA DIN-20039 B 45, 59
ABRAÇADEIRA DIN-20039 A 44, 60
ABRAÇADEIRA SUPER 58
ACOPL. BAUER CA 14
ACOPL. BAUER CB 14
ACOPL. BAUER CC 15
Acopl. Bauer CD 15
ACOPL. ROTULA (JOPER) RA 10
ACOPL. ROTULA (JOPER) RB 10
ACOPL. ROTULA (JOPER) RC 11
ACOPL. ROTULA (JOPER) RD 12
ACOPL. ROTULA (JOPER) RTM 12
ACOPL. STORZ ALUMÍNIO 36
ACOPL. STORZ R.FEMEA ALUMÍNIO 36
ACOPL. STORZ R.MACHO- ALUMÍNIO 37
ACOPLAMENTO FEM P/BETAO 40, 41
ACOPLAMENTO MACHO P/BETAO 40, 41
ACOPLAMENTO TIPO UMT-A FEMEA 17
ACOPLAMENTO TIPO UMT-B MACHO 17
ACOPLAMENTO TIPO UMT-C FEMEA 18, 20
ACOPLAMENTO TIPO UMT-D MACHO 18, 20
ADAPTADOR API / KAMLOCK 28

C

CAMISA INDUST. INOX-316 63
CAPSULA ALUMINIO 63
CAVILHA P/ ACOPL. BETAO 42
CHAVE P/ STORZ 39, 62

E

ESPIGA P/ SOLDAR FERRO 47
ESPIGA T/T FERRO 47

G

GUILLEMIN C/ANEL MOD.A P/TUBO 31
GUILLEMIN C/ANEL MOD.D R/FEMEA 32
GUILLEMIN C/ANEL MOD.E R/MACHO 33
GUILLEMIN JUNTA MOD-J 34
GUILLEMIN REDUÇÃO C/ANEL MOD.R 34
GUILLEMIN S/ANEL MOD.B R/FEMEA 31
GUILLEMIN S/ANEL MOD.C R/MACHO 32
GUILLEMIN TAMPÃO C/ANEL MOD.T 33

J

JUNTA BRANCA P/STORZ A 38

Junta P/Acopl. Bauer 16
JUNTA P/ ACOPLAMENTO DE BETAO 41
JUNTAS - J 28

K

KAMLOCK TIPO-A 22
KAMLOCK TIPO-AA 29
KAMLOCK TIPO-B 22
KAMLOCK TIPO-C 23
KAMLOCK TIPO-D 24
Kamlock Tipo-DA Red. Femea Macho Alumínio 30
KAMLOCK TIPO-DC 27
KAMLOCK TIPO-DP 26
KAMLOCK TIPO-E 25
KAMLOCK TIPO-F MACHO R. MACHO 26

L

LIGADOR C/GOLA DIN 3483 43
LIGADOR DIN 3483 43
LIGADOR R/FEMEA DIN 3482 44
LIGADOR R/MACHO DIN 3483 44

M

MANIPULO P/ ACOPL. BETAO 42

P

PONT. FEMEA BSP DIN-2817 49
PONT. MACHO BSP DIN-2817 49
PONT. REUSAVEL FEMEA BSP P/ TUBO COMBUSTIVEL 50
PONT. REUSAVEL MACHO BSP P/ TUBO COMBUSTÍVEL 52
PONTA ROSCADA MACHO P/ SOLDAR FERRO 47
PONTEIRA FÊMEA DIN INOX 316 54
PONTEIRA FÊMEA SMS INOX 316 53
PONTEIRA MACHO DIN INOX 316 54
PONTEIRA MACHO SMS INOX 316 53
PONTEIRA TRI-CLAMP INOX-316 55

S

STORZ REDUÇÃO B ALUMÍNIO 37
STORZ TAMPÃO ALUMÍNIO 38

V

VED. P/ TRI-CLAMP SILICONE (DN25) 23X50X5,5 56
VEDANTE MULLENBACH 45
VEDANTE P/ACOPL. UMT 18, 20
VEDANTE ROTULA (JOPER) 13